

M2 Office Technology

RICOH
imagine. change.

IM C3000A
IM C3000
IM C3500A
IM C3500

☑ Copier ☑ Printer ☑ Facsimile ☑ Scanner



Next generation workgroup **full colour A3 MFP**

M2 Office

30
YEARS IN BUSINESS
1992 - 2022



☎ (061) 303 666 | (01) 6111 025

✉ sales@m2.ie



www.m2.ie | m2officeinteriors.ie



Intelligent functionality to help you communicate more efficiently

Welcome to a new era of technology that keeps your workplace up-to-date, now and in the future. Smarter working made simple thanks to the IM C3000(A)/C3500(A).

Today's workplace needs to be ready for tomorrow. Ricoh's intelligent devices provide smooth access to functionality updates and productivity enhancements when they are released, without needing to change your hardware. Turn your device into a powerful hub that helps you manage information workflows efficiently, using technology that's scalable, secure, sustainable and simple.

Ricoh's Always Current Technology allows new features, applications and updates to be downloaded and installed directly to your RICOH Intelligent Device on request, directly from the Smart Operation Panel. So you can access the latest technology as soon as it's available. Regardless of when your Ricoh device is purchased, if it's supported by Always Current Technology it's always kept up to date with the latest features and functionality.





Manage information workflows efficiently, using technology that's secure, sustainable and simple.



Printing from 30 to 35 ppm, the IM C3000(A)/C3500(A) offer next-level productivity. Interact with the 10.1" Smart Operation Panel like a typical smart device and configure it for quick and easy access to apps you use most often. A variety of mobile connectivity options enable printing or scanning to the office network or cloud from a smart device, with built-in support for NFC, AirPrint* or Mopria. All this underpinned by a unique suite of workflow apps from RICOH Smart Integration.

Simple no nonsense functionality:

- Protect your devices with easy access to security updates
- Take advantage of easy productivity updates at your own pace
- Save costs by bringing high-standard quality office print output in-house
- Maximise productivity with streamlined workflows

Get greater control of scan and print management functions:

- Scan smaller documents with the small size paper scan unit
- Improve scan accuracy – with double feed detection unit
- Enhance print management – with EFI controller
- Produce professional grade flyers with internal multi-folding unit

Intelligent features:

- Efficient working and reduced user intervention – with expanded paper capacity
- Variable finishing and paper options – for a more professional touch
- A consistent & streamlined user experience across your fleet
- Maximum device uptime and minimal disruption



Enable Greater Control of Scan and Print Management

Scanning of smaller sized documents can be easily done with the new small sized paper scan unit. The double feed detection unit helps to improve scan accuracy while the EFI controller enhances print management. Now, you can also create professional grade flyers at your own convenience with our internal multi-folding unit.



Maximise Cost Savings

Enjoy lower running costs and reduced energy consumption thanks to environmentally friendly low TEC (Typical Electricity Consumption) values. Furthermore, take advantage of RICOH Intelligent Support services that anticipate potential issues and send corrective instructions via the Smart Operation Panel, avoiding interruptions and prolonging the optimal performance of your device – avoiding the need for intervention by more costly IT resources.



Seamless User Experience

Our intelligent devices offer efficient working and reduced user intervention by expanding paper capacity. Choose from our versatile finishing and paper options for a professional touch to save time and reduce outsourcing expenses. With RICOH Intelligent Support, experience maximum device uptime and minimal disruption across all your devices.



Next-level Productivity with Smart Operations

Interact with the 10.1" Smart Operation Panel like a typical smart device and configure it for quick and easy access to apps you use most often. A variety of mobile connectivity options enable printing or scanning to the office network or cloud from a smart device with built in support for NFC, AirPrint or Mopria. All this underpinned by a unique suite of support apps from RICOH Smart Integration.



Smart evolution

Printers and multifunctional devices are essential business tools. We continuously develop our products, enhancing functionality and adding new features that make them ever more productive and efficient. We created RICOH Always Current Technology to allow you to benefit from the latest enhancements without needing to upgrade from one model to another.

With RICOH Always Current Technology, you have access to the latest features and functionality supported by your device, regardless of when it was purchased.

Dynamic scalability

With RICOH Always Current Technology, the capabilities of your device can grow with your business. Our platform allows you to install new features as they become available; there is no need to call a technician or wait until the end of a contract. New applications can be downloaded directly from the RICOH Application Site.

You can invest with confidence in Ricoh technology, knowing that its functionality and value will grow over time.

RICOH Intelligent Devices

With RICOH Intelligent Devices, you benefit from outstanding quality, reliability and security. What is more, you can connect your RICOH Intelligent Device to external cloud services and install workflow applications which help your employees work faster, smarter and more securely.



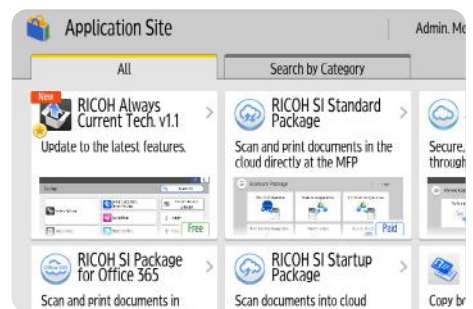
Smart Operation Panel

Unlock the full extent of your device capabilities with the user-friendly Smart Operation Panel. Its intuitive touchscreen interface mimics that of your smart device. And, because it is consistent across all RICOH Intelligent Devices, it provides a uniform and easy-to-use platform.



RICOH Application Site

Accessed via the Smart Operation Panel of your RICOH Intelligent Device, the RICOH Application Site allows you to download and run a variety of smart applications on your device. The apps are designed to meet specific business needs and will help to streamline your workflow.



RICOH Smart Integration

RICOH Smart Integration helps automate document workflow tasks, without the capital expense of on-premise software. Simplify mobile printing, or the scanning of documents to destinations, whether that is a local folder or to a cloud account, such as Box, Dropbox, Office 365 or others.



RICOH Intelligent Support

Our multifaceted service and support platform provides help when it is needed. How-to videos, accessed via the Smart Operation Panel, help you complete simple tasks like toner replacement quickly and easily. And, we are able to provide fast support through remote access to your Smart Operation Panel, if required.



ENVIRONMENTAL FEATURES & PROGRAMS

ENERGY SAVINGS



Quick Start-up and Recovery

These devices enable fast warm up and recovery times, speed job queues and maximize customer satisfaction while saving energy.



Sleep mode timer

Places the machine in very low energy consumption sleep mode after a predetermined time. Because the machine is not off, it can awaken quickly for use.



Auto on/off timer

These devices can be turned on or off at specified times, allowing customers to match system availability and power consumption to their work schedule to reduce costs.



Weekly timer

Switches to low energy consumption sleep mode on a specified day and time of the week to help balance system availability and power consumption.



Motion sensors

The IM C3000/IM C3500 promote efficiency by detecting a user's presence so the Smart Operation Panel responds quickly to user input.



Polymerized PXP™ Toners

Provides more vivid colors and smoother gradations for improved photographic reproduction while using less temperature/heat energy.

PAPER SAVINGS



Duplexing

The IM C3000/IM C3500 cut paper bills in half and save trees by making duplexing the norm and printing on both sides of the paper.



Locked print

Saves paper and other consumables by only printing documents released by the user with a password at the machine. This capability of the IM C3000/IM C3500 also ensures confidential documents are kept safe.



Do not print blank pages

This function of the IM C3000/IM C3500 eliminates the blank pages within a document that require unnecessary use of resources, reducing paper waste.



Condense multiple pages

Reduces the amount of paper required to print and copy by condensing multiple pages into one.



Sample print

Automatically outputs a sample set before committing the system to a lengthy print job that could result in error and waste.

EFFICIENCY



Eco-friendliness widget

These devices display percentage of paper reduction and color utilization to increase environmental awareness.



Staple-free option

Ricoh's exclusive unique technology on the IM C3000/IM C3500 binds up to five sheets of paper using no staples.



Toner saving mode

Toner saver mode is an effective way to reduce printing costs with less toner than usual. This function of the IM C3000/IM C3500 is convenient when print outs are needed for internal viewing.



Recycled paper runability

The IM C3000/IM C3500 have the ability to work using paper with higher recycled content, which reduces environmental impact.

ECO LABELS



ENERGY STAR® certified (U.S. and Canada only)

RICOH IM C3000/IM C3500 devices are ENERGY STAR® certified. The ENERGY STAR® certification indicates that the U.S. Government approves the device as energy efficient in design and specification. ENERGY STAR® certified products contribute to a more energy-efficient world and help keep your costs affordable.



EPEAT® Gold rated (U.S. only)

EPEAT® is a comprehensive procurement program which includes energy efficiency, take-back programs for equipment, packaging and consumables, reduction/elimination of environmentally sensitive substances and other important environmental attributes. The RICOH IM C3000/IM C3500 devices have earned an EPEAT® Gold rating.



Ecologo® certified (Canada only)

ECOLOGO® certified products are multi-attribute, life cycle-based environmental sustainability standards that indicate a product has exceeded product performance standards.



Blue Angel Mark (Europe only)

Developed by the federal government of Germany, the Blue Angel environmental ecolabel sets high standards for product design and sustainable consumption.



EcoLeaf product carbon footprinting

The EcoLeaf environmental label uses the life cycle assessment method to evaluate the environmental information of products through life cycle stages to determine if impact has lessened over time.

RECYCLING PROGRAMS



Global consumables take-back program

Toner containers and cartridges can be returned to us. Our environmentally friendly recycling helps keep plastic and other materials out of landfills while yielding usable materials. Visit ricoh-return.com for services in your area.



End-of-life equipment recycling

Take-back programs look to refurbish and reuse devices or perform environmentally responsible demanufacturing to recover reusable parts and materials that can be recycled or converted into other useful resources.

CO₂ REDUCTION PROGRAMS



Sustainability optimization program

This structured, measurable, professional services program uses continuous tracking, benchmarking and correcting along the way to ensure that driving sustainability is a top priority and improvements last.



Carbon balancing

The Carbon Balanced Printing program helps customers offset the remaining unavoidable carbon footprint of their document management processes using UNFCCC Gold Standard carbon credits.

RICOH IM C3000A / C3000 / C3500A / C3500

MAIN SPECIFICATIONS

GENERAL	IM C3000A	IM C3000	IM C3500A	IM C3500
Warm-up time	21 seconds			
First output speed: B/W	4.5seconds			
First output speed: Full Colour	6.9 seconds			
Continuous output speed	30 ppm	30 ppm	35 ppm	35 ppm
Memory: Std/Max	2 GB Std / 4GB Max			
HDD Std/max	320GB Std/Max			
ARDF Capacity	100 Sheets			
SPDF Capacity	220 Sheets			
Weight	99.4 kg	94 kg	99.4 kg	94 kg
Dimensions W x D x H	587 x 685 x 963 mm	587 x 685 x 913 mm	587 x 685 x 963 mm	587 x 685 x 913 mm
Power source	220 - 240 V, 50/60 Hz			

PRINTER

CPU	ApolloLake E3930 1.3 GHz
Printer language: Standard	PCL5c, PCL6, Postscript 3 (emulation), PDF direct (emulation)
Printer language : Option	Genuine Adobe ®PostScript®3™, PictBridge, PDF Direct from Adobe®
Print resolution	1,200 x 1,200 dpi
Network interface: Standard	Ethernet 10 base-T/100 base-TX/1000 base-T, USB Host I/F Type A, USB Device I/F Type B
Network interface: Option	Bi-directional IEEE 1284/ECP, Wireless LAN (IEEE 802.11a/b/g/n), Additional NIC (2nd port)
Mobile printing capability	Apple AirPrint™, Mopria, Google Cloud Print, NFC, Ricoh Smart Device Connector
Windows® environments	Windows® 7, Windows® 8.1, Windows®10, Windows® Server 2008, Windows® Server 2008R2, Windows® Server 2012R2, Windows® Server 2016
Mac OS environments	Macintosh OS X Native v10.11 or later
SAP® environments	SAP® R/3®, SAP® S/4®
Other Supported environments	UNIX Sun® Solaris, HP-UX, SCO OpenServer, RedHat® Linux Enterprise, IBM® AIX. IBM iSeries.

COPIER

Multiple copying	Up to 999 copies
Resolution	600 dpi
Zoom	From 25% to 400% in 1% Step

SCANNER

Scanning speed: ARDF	80 ipm (200/300 dpi)
Scanning speed: SPDF	120 ipm (simplex)/240 ipm (duplex)
Resolution: maximum	1200 dpi
Compression method	TIFF (MH, MR, MMR, JBIG2), Grayscale
File Formats	Single Page TIFF, JPEG, PDF, PDF/A. Multi page TIFF, PDF, PDF, PDF/A.
Scan modes	Email, Folder, USB, SD Card

FAX

Circuit	PSTN, PBX
Transmission speed	2 seconds
Modem speed: Maximum	33.6 Kbps
Resolution: Standard	8x3.85 line/mm, 200x100 dpi
Resolution: Option	16x15.4 line/mm, 400x400 dpi
Compression method	MH, MR, MMR, JBIG
Scanning speed: Standard models	81 spm
Scanning speed: A models	68 spm
Memory: STD/Max	4MB (320 Pages) / 60 MB, (4,800 pages)

PAPER HANDLING

Recommended paper size	Standard paper tray(s):SRA3, A3, A4, A5, A6, B4, B5, B6, Envelopes Optional paper tray(s):SRA3, A3, A4, A5, A6, B4, B5, B6, Envelopes Bypass tray:SRA3, A3, A4, A5, A6, B4, B5, B6, Envelopes, Custom Size paper
Paper input: Standard	1,200 sheets
Paper input: Maximum	4,700 sheets
Paper output: Standard	500 sheets
Paper output: Maximum	1,625 sheets
Paper weight	Trays: (60 - 300 g/m ²), Bypass: (52 - 300 g/m ²), Duplex: (52 - 256 g/m ²)
Paper types	Plain paper, Recycle paper, Special paper, Colour paper, Letterhead, Cardstock, Preprinted paper, Bond paper, Coated paper, Envelope, Gloss paper, Label paper, OHP

RICOH IM C3000A / C3000 / C3500A / C3500

MAIN SPECIFICATIONS

ECOLOGY	IM C3000A	IM C3000	IM C3500A	IM C3500
Power consumption: max.	Less than 1,700 W			
Power consumption operation: B/W	503.3 W	503.3 W	532.9 W	532.9 W
Power consumption operation: Full colour	559.7 W	559.7 W	598.6 W	598.6 W
Power consumption: ready	47.6 W			
Power consumption: sleep	0.55 W			
TEC	1.1 kWh	1.1 kWh	1.3 kWh	1.3 kWh

OUTPUT TRAYS / FINISHER OPTIONS

2x 550-sheet paper tray	Paper size: (SRA3, A3, A4, A5, A6, B4, B5, B6), Paper weight: (60-300 g/m ²)
1x 550-sheet paper tray	Paper size: (SRA3, A3, A4, A5, A6, B4, B5, B6), Paper weight: (60-300 g/m ²)
2,000-sheet Large capacity tray	Paper size: (A4), Paper weight: (60-300 g/m ²)
1,500-sheet side Large capacity tray	Paper size: (A4, B5), Paper weight: (60-300 g/m ²)
1,000-sheet Hybrid finisher	Paper size: (SRA3, A3, A4, A5, A6, B4, B5, B6), Paper weight: (52-300 g/m ²), 1,000 sheets, Staple capacity: (50 sheets), Staple paper size: (A3, A4, A5, B4, B5), Staple paper weight: (52-105 g/m ²), Staple positions: (Top, Bottom, 2 Staples)
1,000-sheet Booklet finisher	Paper size: (SRA3, A3, A4, A5, A6, B4, B5, B6), Paper weight: (52-300 g/m ²), Stack capacity: (1,000 sheets), Staple capacity: (50 sheets), Staple paper size: (A3, A4, A5, A6, B4, B5), Staple paper weight: (52-105 g/m ²), Staple positions: (Top, Bottom, 2 staples, Booklet)
250-sheet Internal finisher	Paper size: (A3, A4, A5, A6, B4, B5), Paper weight: (52-300 g/m ²), Stack capacity: (250 sheets), Staple capacity: (5 sheets), Staple paper size: (A3, A4, A5, B4, B5), Staple paper weight: (64-80 g/m ²), Staple positions: (Top)
500-sheet Internal finisher	Paper size: (A3, A4, A5, A6, B4, B5), Paper weight: (52-300 g/m ²), Stack capacity: (500 sheets), Staple capacity: (50 sheets), Staple paper size: (A4, A5, B4, B5), Staple paper weight: (52-105 g/m ²), Staple positions: (Top, Bottom, 2 staples)
Internal shift tray	Tray capacity: (250 sheets), Paper size: (SRA3, A3, A4, A5, A6, B4, B5, B6), Paper weight: (52-300 g/m ²)
One-bin tray	Tray capacity: (125 sheets), Paper size: (A3, A4, A5, B3, B4), Paper weight: (52-300 g/m ²)

OTHER OPTIONS

Fax unit, G3 Interface, Fax connection unit, Fax memory unit, Cabinet, Caster table, VM card, Memory unit, Side Tray, Banner paper guide tray, Punch units, Internal Multi-fold unit, Camera direct print card, Genuine PostScript 3, IEEE 1284 I/F, IEEE 802.11 a/g/n I/F, Device server unit, File format converter, OCR unit, Enhanced security HDD, Data overwrite security unit, Small paper feeding unit, Page keeper, Imageable area extension unit, ADF handle, External keyboard bracket, Counter I/F unit, Key counter bracket, NFC card reader, Smart card reader built-in unit, EFI controller, EFI Impose, EFI Compose, EFI Hot folders, EFI Spot on

CONSUMABLES

Toner: Black	31,000 prints
Toner: Cyan/Magenta/Yellow	19,000 prints

Consumable yield based on 2p/j, 6% coverage on A4.

Dublin Showroom

City Post Buiding
Greenogue Business Park
Jordanstown
Dublin
D24 RY89

Contact
(01) 6111 025
sales@m2.ie

Limerick Showroom

Unit A2
Corcanree Business Park
Dock Road
Limerick
V94 F2N1

Contact
(061) 303 666
sales@m2.ie

M2 Office Technology

30
YEARS IN BUSINESS
1992 - 2022